



The OE Elsafe Pathfinder system has been designed from 30 years of experience in supplying cable management products. Pathfinder offers a complete floor to desk, floor to ceiling, or ceiling to desk, vertical cable management solution.

KEY FEATURES

- Unique PATHFINDER GROMMET for feeding under floor cables directly into the umbilical
- Pathfinder can be extended on-site with a simple 'Push & Click' to suit different applications
- Wide range of floor, desk and ceiling fixing options to provide total cable management
- Internal segregation for power and data cables

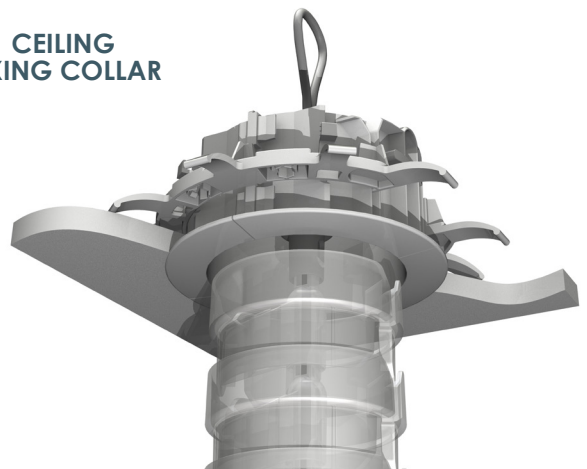
Flexible umbilical in four colour options: white, black, silver or clear polycarbonate

Combine PATHFINDER with one of the OE Elsafe cable trays or wire-baskets for optimum cable management.

FIXING BRACKET



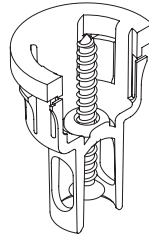
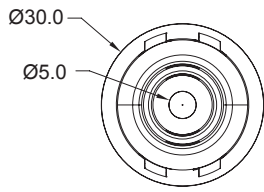
**CEILING
FIXING COLLAR**



**DESK FIXING
COLLAR**

pathfinder TECHNICAL

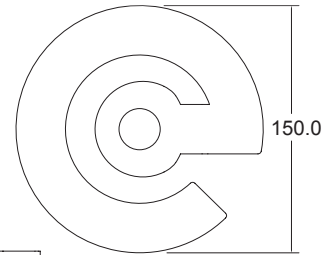
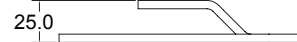
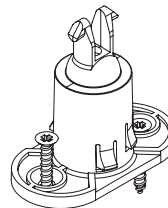
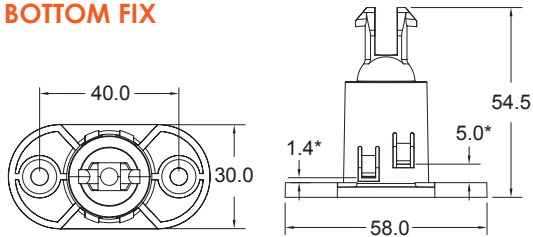
TOP FIX



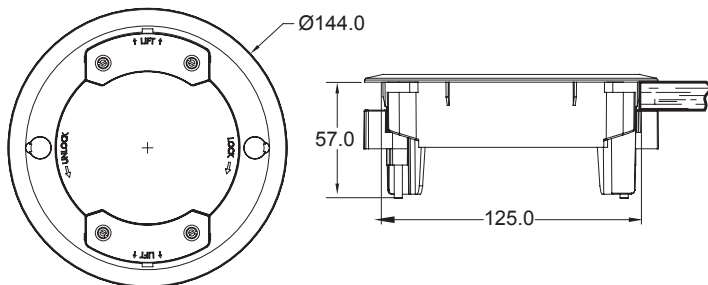
WEIGHTED BASE



BOTTOM FIX



FLOOR GROMMET



PATHFINDER CABLE AND CONDUIT CAPACITIES				
Cable Size (OD = Outer Diameter)	Cable Type (examples)	Small compartment	Large compartment	Grommet sides (each side)
Cables 6mm OD	eg: CAT5e	19 1	58 1	12 1
Cables 9mm OD	eg: 3 core 1.5mm ² /CAT6	8 1	26 1	6 1
Cables 11mm OD	eg: 3 core 2.5mm ²	6 1	17 1	4 1
Conduit 16mm OD	eg: underfloor track tap-off	2 2	6 2	2 2
Conduit 20mm OD	eg: data conduit	1 23	3 23	0
Conduit 25mm OD	eg: data conduit	1 23	1 23	0

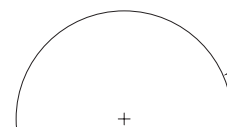
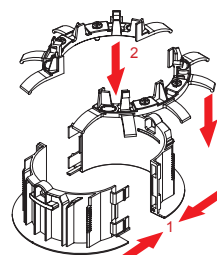
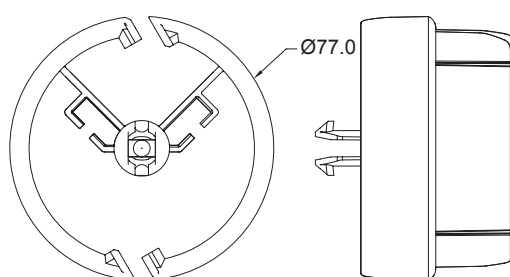
GROMMET CUTOUT 125 - 128mm (5inch)

PUSH FIT thicknesses min 10mm

CLAMP FIT thicknesses min 10mm max 50mm

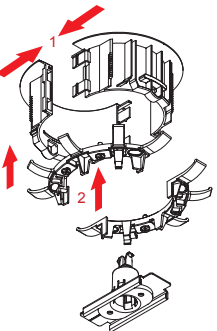
Note: 1 – At 40% fill
2 – Maximum
3 – 20mm conduit cannot be inserted with the Zipper
All capacities reduce if using the Pathfinder Zipper

CEILING COLLAR

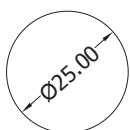


Cutout hole is Ø102mm (4inch) with
cutout hole thickness 2-40mm

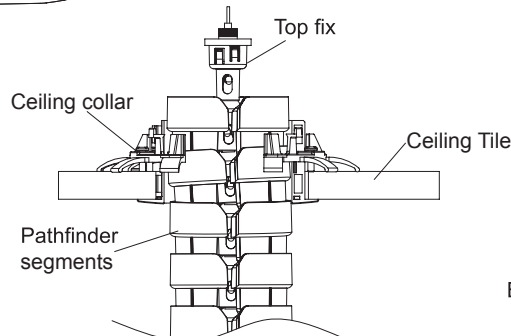
DESK FLANGE



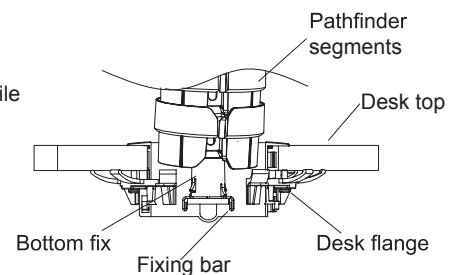
CUTOUT DIMENSIONS
(both top & bottom fix)



* OPTIONAL PANEL
THICKNESSES



Note: DO NOT hang PATHFINDER from
Ceiling Collar, it is only a pass-thru



Note: DO NOT use Desk Flange upside
down to hang from false ceiling tiles